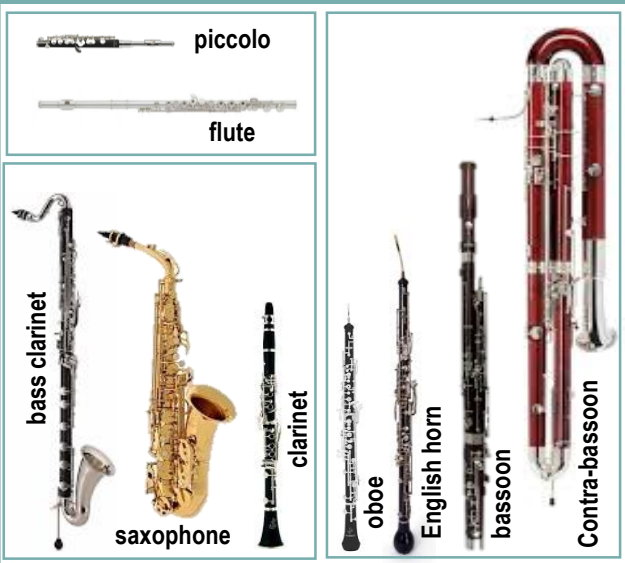


STRING FAMILY



WOODWIND FAMILY



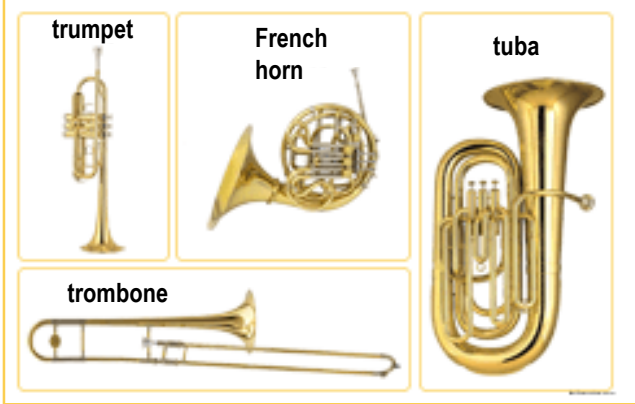
The Orchestra



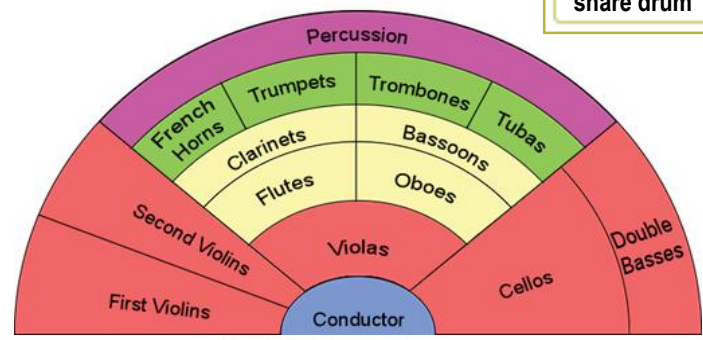
Conductor

Did you know?
The bigger the instrument,
the lower the pitch

BRASS FAMILY



PERCUSSION FAMILY

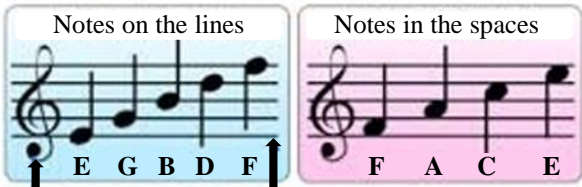


Sections of the Orchestra

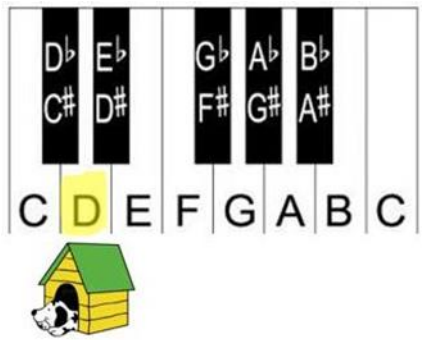
Learning to Read Music



The notes are either on the line or in the space



Treble Clef Stave (the 5 lines)



Finding the notes on the
KEYBOARD
The dog is in the kennel
(D is between two black notes)

Musical ELEMENTS
(to describe and build music)

PITCH
(high/low notes)

RHYTHM
(long/short notes)



| | | |
|--|------------|----------|
| | Semibreve | 4 beats |
| | Minim | 2 beats |
| | Crotchet | 1 beat |
| | Quaver | 1/2 beat |
| | Semiquaver | 1/4 beat |

| | |
|----------|-----------------|
| Pitch | High / low |
| Rhythm | Long / short |
| Tempo | Speed |
| Dynamics | Volume |
| Texture | Layers of sound |
| Timbre | Type of sound |
| Tonality | Major / minor |