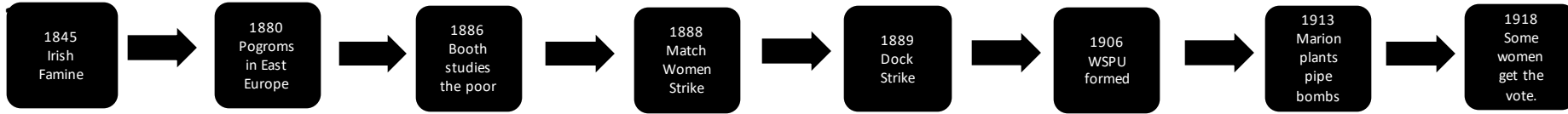
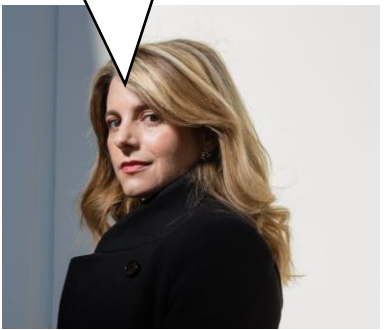


# To what extent did life change for ordinary people in Whitechapel between 1880 and 1914?



Key Word	Definition
Anti-Semitism	Hatred and discrimination towards Jewish people.
Census	Document collected by the Government to monitor the population.
Democracy	Government based on participation by the people.
Hunger-Strike	Protest by a prisoner by refusing to eat.
Industrial Revolution	1750-1900. Steam power and machinery used to produce goods.
Pauper	Someone who is unable to support themselves and has to go to the workhouse.
Phossy Jaw	Condition caused by exposure to white phosphorus. Jaw rotted.
Pogroms	Violence towards Jews in Eastern Europe after 1880.
Slum	Overcrowded poor quality housing.
Strike	Refusal to work as a protest against conditions.
Suffrage	Right to vote.
Workhouse	Only support offered to paupers. Often feared.
WSPU	A group prepared to use violence to gain the vote for women.

The throbbing dark heart at the centre of the district was Whitechapel. Here were situated some of the worst streets and accommodation in the area. Nowhere was this more apparent than in the common lodging houses, which offered shelter to those too poor to even afford a "furnished room". The lodging houses provided temporary homes for the homeless, who divided their nights between the reeking beds on offer here, the oppression of the workhouse casual wards, and sleeping on the streets. In Whitechapel alone there were 233 common lodging houses, which accommodated an estimated 8,530 people.  
**Hallie Rubenhold, *The Five***



	Knowledge Milestones	Extra Knowledge	Expert Knowledge
	Whitechapel was part of the East End of London.	There was significant poverty and many families lived in overcrowded slum housing with no sanitation.	Lodging Houses allowed people to rent a bed for the night. People also slept on the Tuppenny Hangover.
	Many Irish migrants settled in Whitechapel.	They were fleeing the Famine in Ireland in 1845. It is estimated that 1.5m emigrated.	They faced persecution as they were Catholic. They were also competition in the unskilled job market.
	Jews moved to Whitechapel to avoid pogroms.	They often worked in the clothing trade and spoke a different language.	They set up support for other Jewish people like the Jewish Free School in 1887.
	Match women at the Bryant and May factory went on strike in 1888.	They were complaining about poor wages (4 shillings for a 84 hour week) and the risk of Phossy Jaw.	It encouraged other strikes like the Dock Workers Strike in 1889. The number of trade unions also rose from 3 in 1885 to 26 in 1894
	"The Five" shows how people ended up in Whitechapel.	Re-examining the evidence means that we can find out new things about the past.	Historians use evidence to piece together the past. This means it can be interpreted in different ways.
	WSPU used violent methods to get the vote like smashing windows.	It was formed in 1906 under Emmeline Pankhurst.	In 1913 Emily Davison was killed when she was hit by the King's horse during a protest at the Derby.
	Many women from the East End joined the WSPU	Some undertook violent action. Kitty Marion used pipe bombs	Historian Fern Riddell has argued that these women should be called terrorists.

If you want to find out more check out the following links or scan the QR codes on your phone or tablet.

**READ**

[The Match Girls' Strike - People's History Museum: The national museum of democracy \(nhm.org.uk\)](https://www.nhm.org.uk)

**WATCH**

[Hallie Rubenhold's tour of London for The Five - YouTube](https://www.youtube.com/watch?v=...)

**LISTEN**

[Working Class Women in the Suffrage Movement - Women's Suffrage Resources](https://www.workingclasswomen.org.uk)